

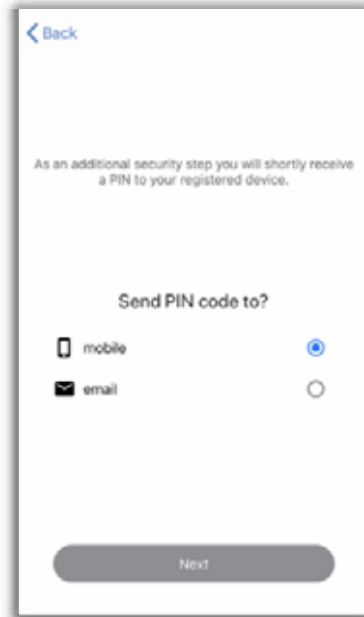


Mobile app quick-start guide

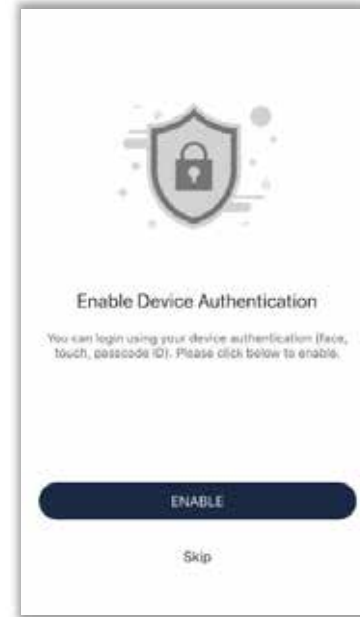
Login and setup



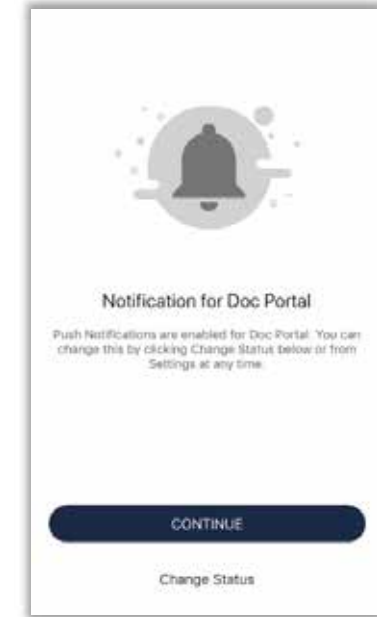
Enter the username and password created when you registered your account, then tap 'Sign In'.



Select where to send your PIN code. This can be sent either to your registered mobile number or email address.



Select 'Enable' to use your device authentication e.g. facial recognition, fingerprint or passcode.



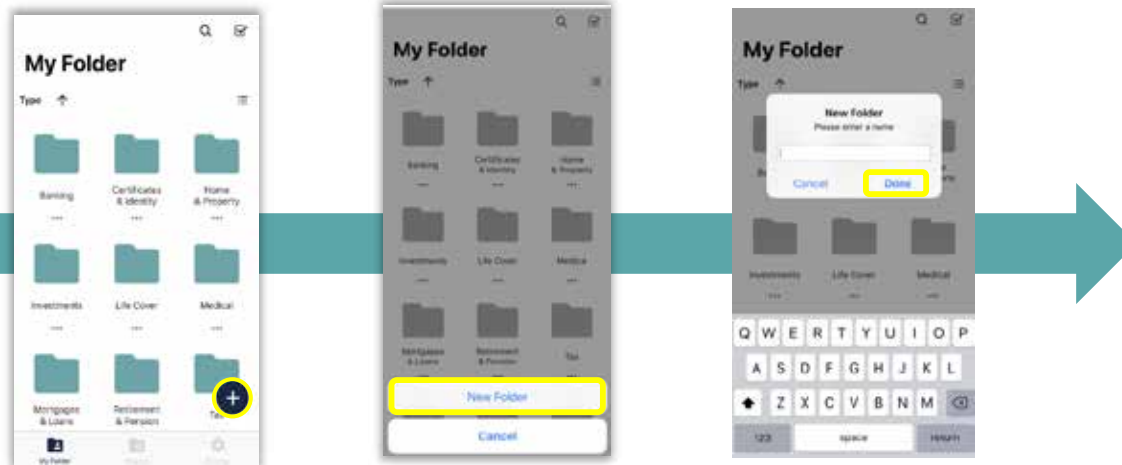
Push notifications are automatically enabled so you will be notified when documents are shared with you. Select 'Continue' to complete login*.



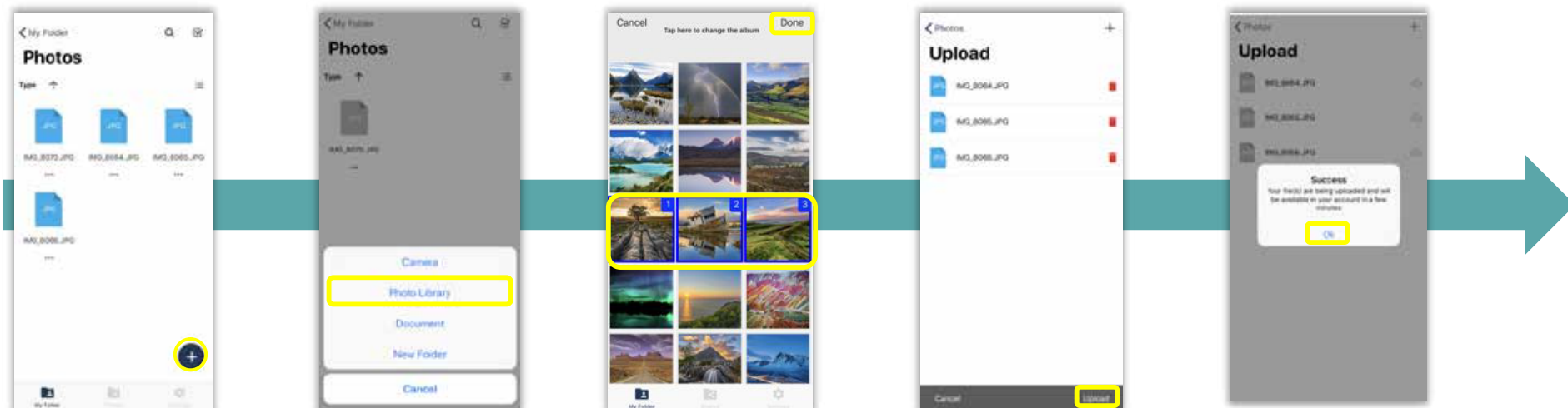
*Once you have completed setup, you only need to use your face, fingerprint or passcode when accessing your account again.

Quick tips

Create a Folder



Upload a File





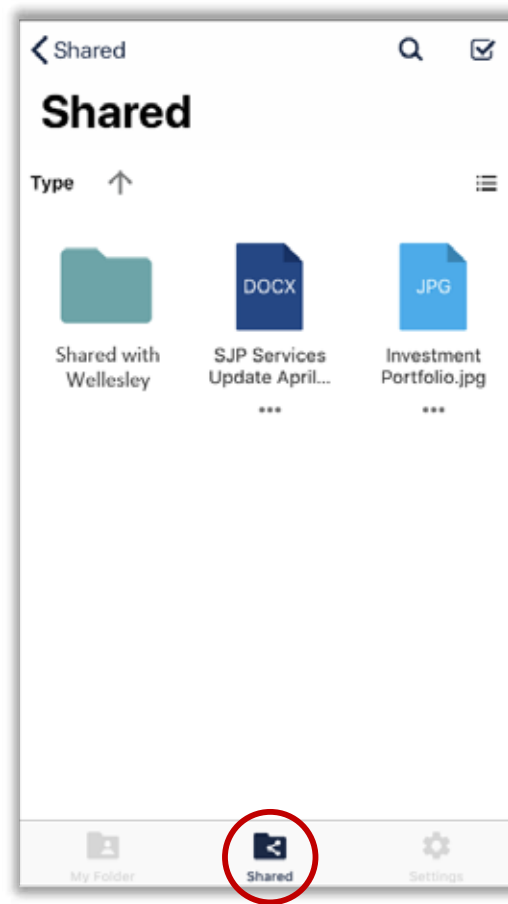
Mobile app overview

Three main screens

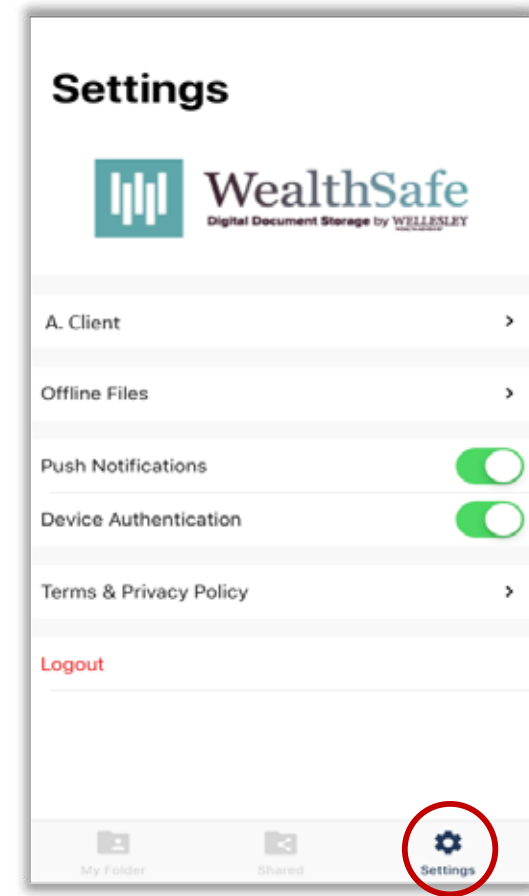
View and manage your folders and files.



View documents that have been shared with you.

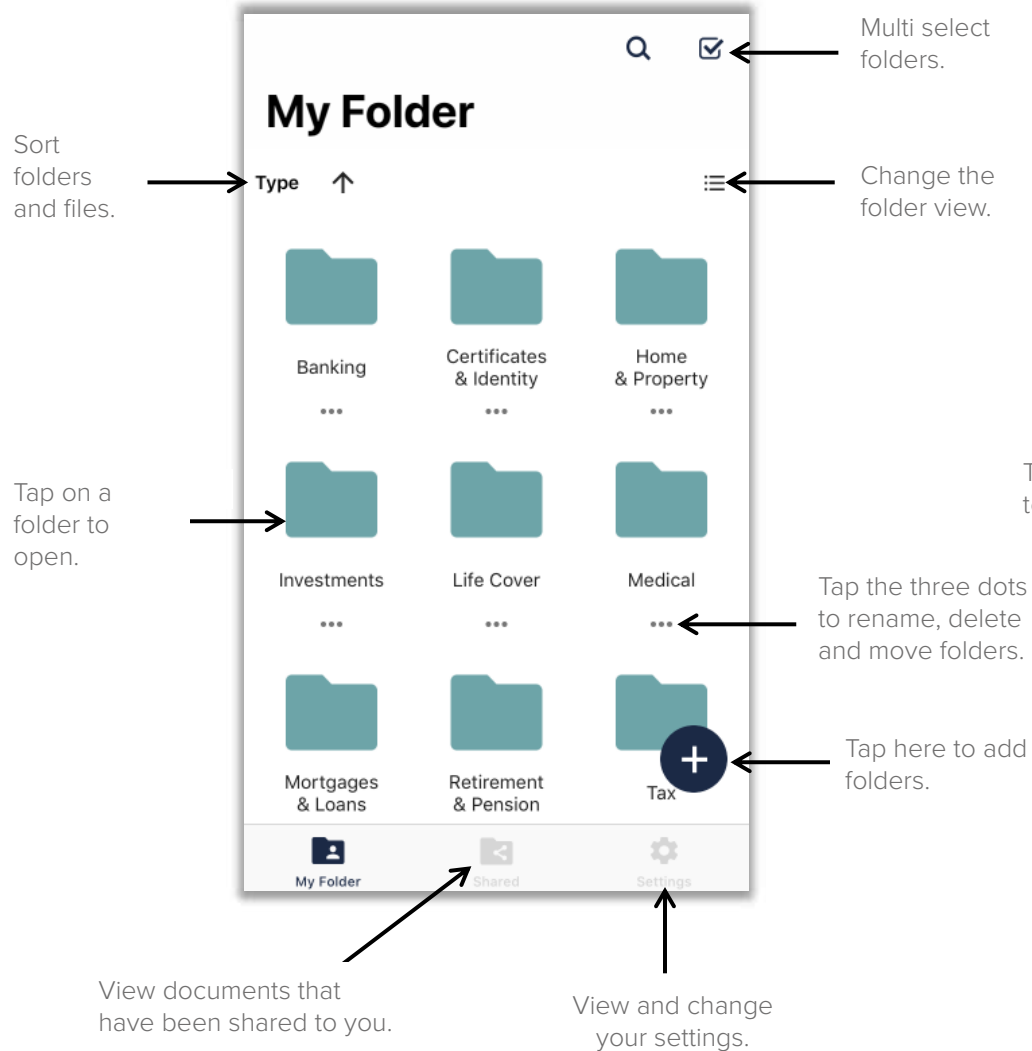


View and change your settings.

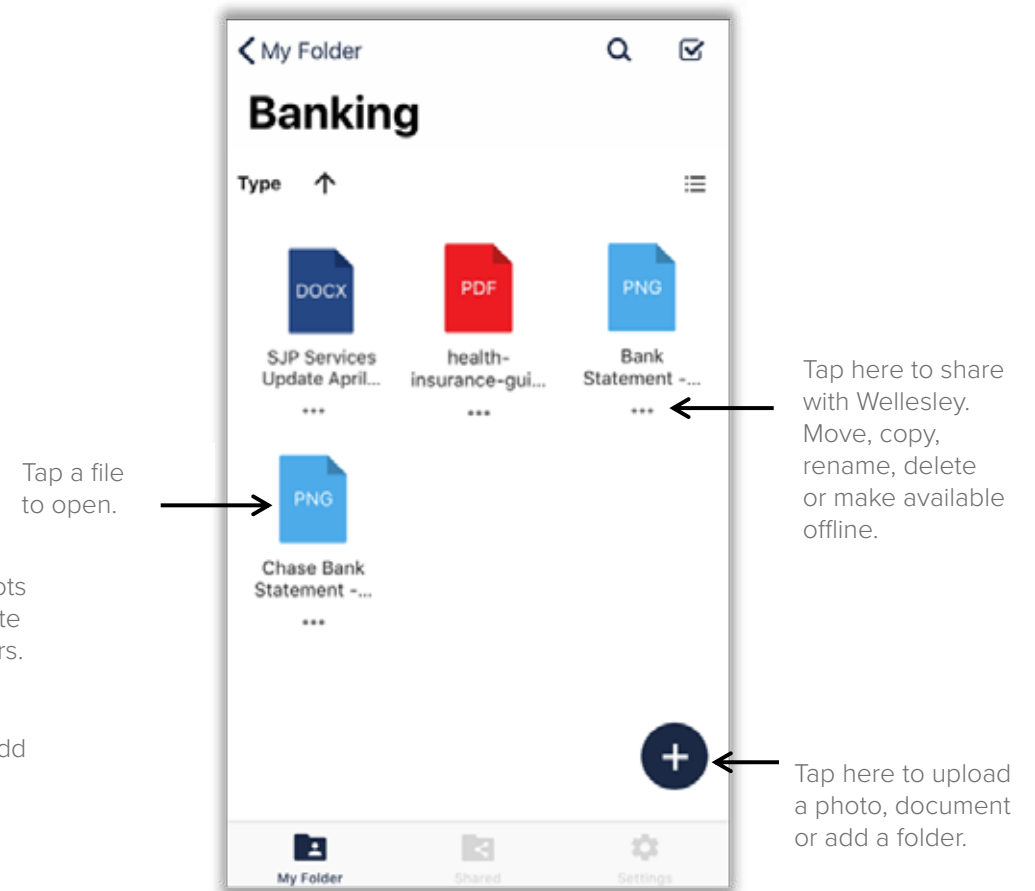


Three main screens

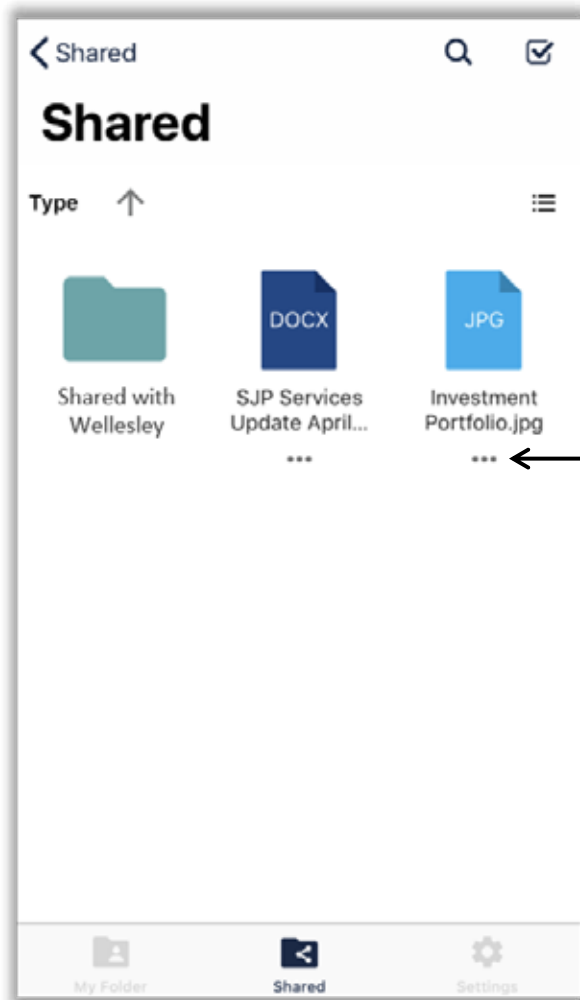
Home screen



Within a folder



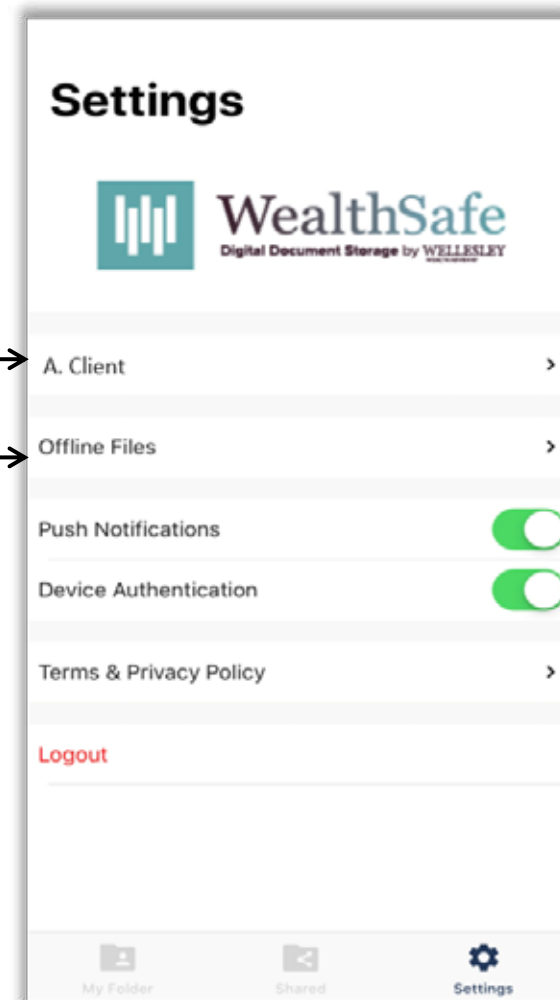
'Shared screen' and 'Settings' overview



Tap the three dots to copy to 'My Folders' or to make available offline.

View profile details.

View files saved offline.



Turn on/off notifications when a document is shared with you.

Turn on/off device authentication e.g. facial recognition, fingerprint or passcode.